

## Cemcote

NOVEMBER 2016

Permacolour Cemcote is a cement based coating, designed to provide a tough, economical coating for direct application onto new or existing concrete surfaces both internally and externally and which will enhance drab or worn out surfaces efficiently. It produces a smooth flowing coating which sets rock hard and is unaffected by ultra-violet light.



## Cemcote

### DESCRIPTION

Permacolour Cemcote is a specially designed cement based coating, supplied in powder form, requiring the addition of water on site, to produce a smooth flowing coating which sets rock-hard and is unaffected by ultra violet light.

### PURPOSE

Permacolour Cemcote is designed to provide a tough, economical coating for direct application onto new or existing horizontal concrete masonry surfaces, which will enhance drab or worn out surfaces efficiently.

Excellent for recolouring concrete surfaces that have been damaged by rain or have not turned out as expected.

Commonly used on floor surfaces including basement and garage floors, footpaths, patios, pavers and driveways.

Please note: Badly damaged concrete will need to be repaired before coating otherwise the rough damaged texture will mirror through the applied coating.

### TYPES

Supplied in two types namely:

- 1) Premixed colours, in 10kg bags.
- 2) Designer Colours comprising of White Base 10kg bags used in conjunction with 300g liquid colour packs (LCP)

### SPECIFYING

Apply two coats of Permacolour Cemcote using a soft broom or brush, to a hard clean surface that has been primed with Permacolour Activator, all in accordance with the manufacturers specifications.

### SURFACE PREPARATION

All surfaces must be clean, hard and free from all loosely adhering particles and containments such as dirt, and oil. New smooth surfaces must be acid etched.

Any existing paints or coatings must be completely removed from the surface to be treated.

### MIXING

- 1) Mixing Premixed Colours:

To 5 litres of water, slowly add 10kg (1 bag) of powder stirring continuously with an electric mixer at a slow speed, until a smooth, even and lump free consistency has been achieved, similar to a thin paint. Allow to stand for five minutes and remix for a further minute.

- 2) Mixing white base with 300g Liquid Colour Packs (LCP)

To 5lt of water, add the liquid colour pack and mix thoroughly at high speed with an electric mixer for one minute. Ensure all the pigment is removed from the container by rinsing in the mix water. Slowly add 10kg (one bag), stirring continuously with an electric mixer at a slow speed, until a smooth, even and lump free consistency has been achieved. Allow to stand for five minutes and remix for an additional minute.

### WEATHER

Do not apply to exteriors if rain is expected or if there is a risk of frost. Apply only between 7 and 25 degrees Celsius surface temperature.

### APPLICATION (SEE APPLICATION TIPS ON PAGE 4)

Plan the application so that the product can be applied from one surface area feature to another whilst maintaining a wet edge, to avoid any unsightly dry joints.

- 1) Using a soft broom or roller apply a primer coat comprising 1 part Permacolour Activator diluted with 1 parts water, and allow to dry completely. In extremely dry conditions, wet the concrete prior to priming. Do not allow water to puddle. The surface can be damp but not glistening with water at the time of application.
- 2) Apply the first coat of Cemcote using a soft broom and immediately roll with a short, strong stiff haired solvent roller. The second coat can be applied in a similar manner, once the first coat has hardened sufficiently (usually 1 hour at 18 degrees Celsius). If applying in very warm conditions (not recommended), use 1-2 parts water. Prime again using diluted Activator between coats. Spraying the product through a hopper gun is an alternative application method.
- 3) After three hours of curing at 20°-25°, Cemcote can be sealed, but best results are achieved after 24 hours. Surfaces should be completely dry before sealing.

### SEALING

All surfaces to be clean and dry at time of sealing. For best results, sealing should be done after midday.

**External Surfaces:** 2 coats Permacolour Concrete Sealer, to protect against efflorescence, wear and weathering. The second coat of sealer can be applied a minimum one hour after the first coat is touch dry, best results achieved after 24hours. Application by solvent/mohair roller or soft broom.

**Internal Floors:** Apply 2 coats sealer selected from the internal Permacolour sealer range. Sealer choice is dependent on the desired finish and location of floor.

## PRODUCT INFORMATION SHEET

### COVERAGE

Approximately 2.5m<sup>2</sup> per kg per coat, depending on suction, surface texture and method of application.

Approximately 25-30m<sup>2</sup> per 10kg bag

### PACKAGING

Cemcote premixed colours - 10kg paper bags

Cemcote white base - 10kg paper bags

Liquid colour packs - 300g pottles

### SHELF LIFE

Stored off the floor in a dry shed in unopened containers for 12 months.

### COLOURS

Available in:

16 Designer colours using liquid colour packs.

Custom Colours are available depending on quantity

### DISCLAIMER

Whilst any information contained herein is true, accurate and represents our best knowledge and experience, no warranty is given or implied with any recommendations made by us, our representatives or distributors, as the conditions of use and the competence of any labour involved in the application are beyond our control. As all Permacolour's technical data sheets are updated on a regular basis, it is the users responsibility to obtain the most recent issue.

### CONDITIONS OF SALE

The material is guaranteed to be of good quality and to conform to our published specifications. Since we have no control over use and application of this material, nor the areas to which it is applied, we disclaim any and all responsibility or warranties, expressed or implied, in connection with its' use, handling and storage or the results obtained; as well as any injury, damage of any nature whatsoever, resulting from its uses.



OATMEAL

RICOCHET

SILVERSAND

GUN METAL

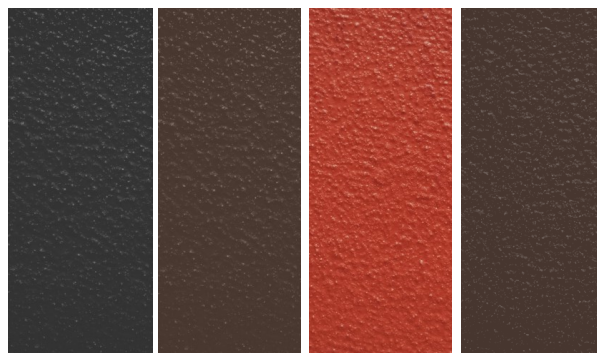


FARRENHEIT

PEARL

WHEAT

KARAKA

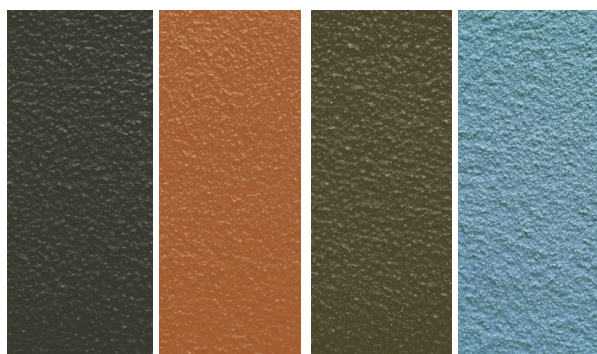


CINDER

MONDO

PULSE

NAPA



MALTA

MANDARIN

EVERGREEN

SKY BLUE

### **Application Tips:**

- 1) Apply from one surface area feature to another, whilst maintaining a wet edge to avoid unsightly dry joints.
- 2) Ensure that Activator primer is completely dry before applying the Cemcote.
- 3) Where possible, avoid application to hot surfaces, as this will increase the set time of the material and reduce workability. A cooler substrate with minimal suction will increase worktime.
- 4) Application with two workers is likely to produce better results as one applies material by broom, whilst the other immediately rolls to remove brush marks.

### **MANUFACTURERS AND SUPPLIERS OF**

#### **BLACK AND COLOURED IRON OXIDES**

POWDER  
GRANULAR  
LIQUID COLOUR

#### **FLOOR COATINGS**

OVERLAY  
CEMCOTE  
COLOUR HARDENER  
CHEMICAL STAIN  
MICRO TOPPING

#### **WALL COATINGS**

CEM PAINT  
MICRO COLOUR  
FIBRECOTE  
DECOCRETE

#### **CONCRETE ADMIXTURES**

ACTIVATOR

#### **SEALERS**

SOLVENT  
EPOXY  
URETHANE  
WATER BASED  
LOW ODOUR  
MATTING AGENTS  
TINTED SEALERS  
DENSIFIERS  
SILICONE BASED

#### **STAMPED CONCRETE MATS**

SEAMLESS  
TIMBER  
SLEEPER  
STONE & BLOCK PATTERNS  
STENCILS

#### **ADDITIVES**

WATERPROOFING  
PLASTICIZING AGENTS  
FIBRES  
ACCELERATORS  
HARDENERS  
EFFLORESCENCE CONTROL AGENTS

#### **ANTISLIP ADDITIVES**

GLASS GRIT  
SLIP REDUCER

#### **CONCRETE TOOLS**

TROWELS  
SCREEDS  
FLOATS  
BROOMS  
ROLLERS  
CONFORM BOXING  
SAFETY NETS  
ELECTRIC & PUMP SPRAYERS  
GRINDING AND CUTTING DISCS

#### **EQUIPMENT HIRE**

GRINDER  
VACUUM

#### **SAFETY GEAR**

HI VIZ VESTS AND JACKETS  
SAFETY BOOTS  
GLASSES

**HEAD OFFICE** 42a Egmont Road, PO Box 7022, New Plymouth,

06 755 3320, [info@permacolour.co.nz](mailto:info@permacolour.co.nz)

**FREEPHONE 0508 444 555**

**AUCKLAND WAREHOUSE** Unit 4, 16 Zelanian drive, East Tamaki, Auckland,

09 272 8444, [auckland@permacolour.co.nz](mailto:auckland@permacolour.co.nz)

**FREEPHONE 0508 666 777**

**CHRISTCHURCH OFFICE** 23 Watts Road, Sockburn, Christchurch

**03 358 9669**, [christchurch@permacolour.co.nz](mailto:christchurch@permacolour.co.nz)

*New Zealand Decorative Concrete Supplies*

*is a private company, 100% New Zealand owned and operated, providing the highest quality products and service in the decorative concrete industry!*