

Decorative Overlay

September 2021

Permacolour Decorative Overlay is a 2-part system, using a special blend of silica sands, cements, additives and top of the range polymer resins. The product is extremely durable, flexible and enjoys high tensile strength. It is applied once, permanently and beautifully with a minimal amount of time taken compared to traditional renovation projects.



DESCRIPTION

Permacolour Decorative Overlay is a 2-part system using a special blend of silica sands, cements, additives and top of the range polymer resins. The product is extremely durable, flexible and enjoys high tensile strength, providing resistance to delamination due to hydrostatic pressure.

Permacolour Overlay system is economical because it provides long-term, durable renovation without the need for costly and continuous repairs normally associated with deteriorating surfaces. It is applied once permanently and beautifully with a minimal amount of time lost compared to traditional renovation projects. Water and chemical resistance as well as aesthetic appeal make Permacolour Overlay the product of choice as an alternative to tile, carpet, vinyl, timber or other heavy duty indoor or outdoor flooring.

BENEFITS

- Double the strength of normal concrete and superior to most other concrete coating products.
- Highly resistant to salt, chemicals, UV, freeze delamination, hydrostatic pressure, stains and mildew, depending on the chosen finish seal coat desired.
- Easy to maintain as the system is seamless without grout lines. Usually water and mild detergents are all that is required.
- Normally applied 2-3mm thick but can be built up to several cm thick.

PURPOSE

Permacolour Decorative Overlay system is applied over existing concrete and masonry surfaces to create beautification, architectural accenting and surface protection as an affordable heavy duty alternative to conventional indoor flooring such as tile, vinyl, carpet, granite, timber etc. Unlimited colours, designs and textures to produce an array of different finishes at less than the cost to replace existing concrete.

Permacolour Overlay can transform plain looking concrete both Internally and externally, with beautiful colour, design and texture.

SPECIFYING

Apply Permacolour Decorative Overlay system to the desired finish, compliant with all surface preparation procedures and all in accordance with the manufacturers specifications.

TYPICAL APPLICATIONS

- Underlayment for tile, vinyl, carpet etc.
- Commercial industrial flooring for heavy duty protection and aesthetic value.
- Hygienic flooring for food processing areas.
- Pool and spa surrounds in residential and commercial environments.
- Driveways, curbs and garages.
- Walkways and patios.
- General patching and resurfacing.
- Tennis court and other recreational areas.

SURFACE PREPARATION

- Chase all cracks with a crack chasing diamond blade and all high areas with a cup grinder to remove all previous surface coatings or spillage. This creates a good base for Permacolour Overlay to bond.
- Vacuum up all dust and pressure clean all chased cracks.
- Fill all cracks with Permacolour approved epoxy
- Prime all surfaces with Pemacolour Activator diluted 50/50 with water and allow to dry before application of Overlay.

MIXING

- Add 3-4 litres of diluted activator (50/50 water/ activator) to a 20ltr mixing container.
- Whilst stirring with a mechanical mixer, slowly add the dry overlay material (20kg). Stir for 2

minutes, allow to stand for 3 minutes, then slowly remix for a further 2 minutes.

WEATHER

Do not apply to exteriors if rain is expected. Primed areas should not be rained on or left in the sun for more than 2 days. In this event, surfaces would require re-priming.

APPLICATION

Permacolour Overlay can be applied to achieve various finishes. Regardless of the desired finish, apply a base coat to the primed surface in the desired colour. Applying the base coat material first ensures proper adhesion. Mix as shown above and allow to dry before proceeding.

Slate Finish

- Pour the mixed material onto the surface and spread with a steel trowel at 4—5mm thick.
- Secondary colour can be added to obtain varied colour designs. Mix this 'highlight' colour in a separate container to a paste consistency and flick onto the base colour using a spoon.
- Allow to stand until the surface firms then trowel again whilst misting the area slightly. The misting liquid should comprise water with a small amount of activator.
- Allow the completed work to dry (2-3 hrs externally or 8-10 hours internally) and then scribe the desired squares or shapes with a 6mm or 9mm scribe.
- Scrape down and blow off all loose material prior to applying the colour wash.
- Mix the colour wash solution, comprising 18 litres water, 1 cup activator and 1/4 to 1 cup (depending on depth of colour required) of colour wash.
- Mist the surface with water only and apply colour wash in the desired colour, using a squeegee to spread quickly over the surface. 2-3 coats may be required to achieve the desired look.

- Misting the surface reduces suction and prevents the colour wash from drying too quickly. Avoid colour washing before the overlay has cured sufficiently to avoid softening the Overlay.
- Allow 24 hours to cure in warm temperatures and at least 36 hours in cooler conditions before sealing. Early sealing will compromise the overlay.

Spray Finish

Always apply the base coat material first in the desired colour.

- Determine the desired pattern, then use 6mm, 9mm or 12mm glass filament tape to create the grout lines and design. A range of patterned stencils are also available.
- Once the pattern has been established on the floor, mask all surrounding areas up to 1200mm beyond the work area.
- Mix the Overlay powder with the diluted activator (50/50 water and activator). Approx. 4.5 litres per 20kg bag. The viscosity of the mix will vary depending on the hopper gun. Outlet pressure on the compressor is not important. Airflow adjustments should be made to the valve on the hopper gun. Do several 'test sprays' on a piece of plastic or cardboard as may be necessary to achieve the correct pressure. Use compressors with a capacity of 12-15 cubic foot per minute.

First Spray— 50% Coverage Required

- A spray texture is achieved by a 'first spray', followed by 2 or 3 highlight sprays. 20-30% of the final colour will be provided by the base coat itself. The 'first spray' will account for the remaining 70-80% of colour. This allows the use of grout colour in the design.
- Holding the gun slightly higher than waist level begin spraying at the furthestmost point and move backwards to the point closest to end.

Walking on the sprayed surface will not be possible for 15-30 min (weather depending). Keep the gun moving in a circular motion, covering approximately 1 metre square at a time until the surface is uniformly covered.

Highlights 10-15% Coverage per Highlight

Highlights are different in colour to the 'first spray' and can be sprayed as soon as walking on the surface does not result in damage

Hold the gun at chest level and spray larger areas at a time, having someone else observing from a different angle to point out areas that are uneven. Allow the 'highlight spray' to dry then remove the tape and masking.

Any high spots can be knocked down with a 350mm floor scraper. A light scrape to the surfaces will result in a smoother surface that is easier to clean and walk on.

- Blow off loose particles and apply desired sealer.

Tile Finish

Always apply the base material first in the desired colour.

- The basecoat must be trowelled down as smooth as possible to allow the top coat to go on the same. A sand or brick rub-down to the skim coat may be required.
- Determine the tile size and orientation, then apply the filament tape to achieve the desired pattern.
- In hot conditions dampen the surface with water by misting very lightly, taking care not to over water.
- Apply the mixed material using a trowel tilted at 35-45 degrees, at no more than 3mm thick. One colour can be used or mixtures of various colours in separate containers can be applied sparingly on the top coat during trowelling.
- Remove tape as you proceed while the Overlay is still green. Once completely dry, sand high spots and edges if necessary to a smooth surface. Early sealing will compromise the overlay.

TIMBER FINISH

- Spread the mixed material onto the surface using a steel trowel at 3-4mm thick.
- While wet drag a magnesium float over the surface to create texture.
- Allow the completed work to dry and then scribe the joint lines using a pointed scriber.
- Scrape down and blow off loose material prior to applying the colour wash. (see slate finish above for colour wash details.
- Apply desired sealer.

COLOURS

Permacolour Decorative Overlay is available in 30 colours. For non standard colours use colour packs to achieve additional options.

Permacolour Colour Wash is available in 18 colours and a product information sheet is also available.

SEALING

External Floors:

2 coats Permacolour Concrete Sealer Extra, high solids sealer. The second coat of sealer can be applied when the first coat is dry. Application by solvent roller or soft broom.

Interior Floors:

Use 2 coats of Permacolour Water based Urethane or Polyaspartic. Or Permacolour two pot solvent based Ureglaze if you are really wanting to enhance the colour.

COVERAGE

Decorative Overlay

- Slate Finish 6-8 sqm per 20kg bag.
- Spray Finish 8-14 sqm per 20kg bag.
- Tile Finish 12-18sqm per 20kg .

Overlay Colour Packs

1 x 600gm pack per 20kg bag of either white base, neutral base or grey base overlay.

Activator

For mixing allow 2ltrs of concentrated activator per 20kg bag of Overlay. For priming allow 1ltr concentrated activator per 15m² depending on suction.

PACKAGING

Decorative Overlay: 20kg bags.

Decorative Overlay Colour Packs: 600gm plastic tubs.

Activator: 2ltr, 5ltr, 10ltr, 20ltr and 200ltr plastic drums.

Colour Wash: 2ltr and 5ltr plastic containers.

SHELF LIFE

Decorative Overlay — 12months in a dry environment.

Overlay Colour Packs—12 months in unopened containers.

Activator—12 months in unopened containers .

Colour Wash—12 months in unopened containers.

The information provided in this brochure is a guideline only.



SLATE FINISH



SPRAY FINISH



TILE FINISH



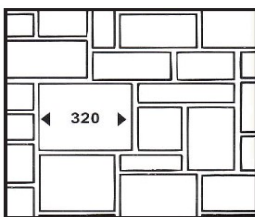
TIMBER FINISH

Decorative Overlay Stencils

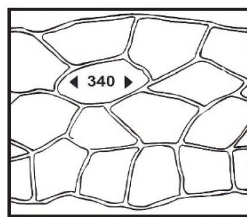
All stencils come in 100m² rolls – Some patterns are available in 50m² rolls

Allowance for waste should be calculated when working out amount needed.

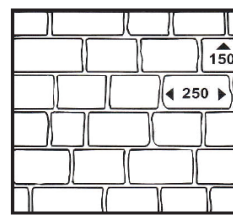
10-15 percent is average. Other stencil designs may be available on request.



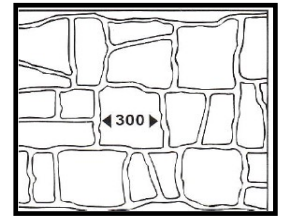
ASHLAR SLATE



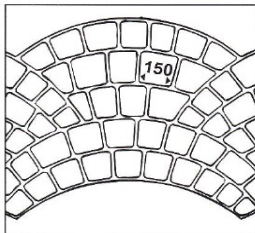
BUSHROCK



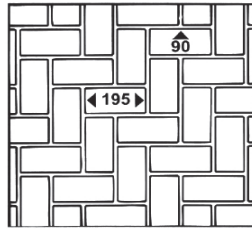
COBBLESTONE



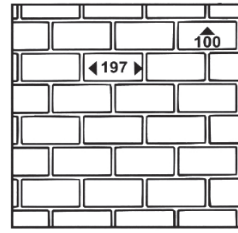
CONVICT BRICK



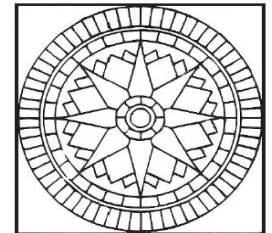
EUROPEAN FAN



HERRINGBONE



RUNNING BOND



STAR ROSETTE



COBBLE HEADER



BRICK HEADER COURSE



CONVICT HEADER

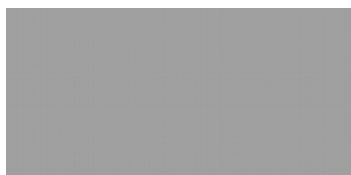
Decorative Overlay

January 2018

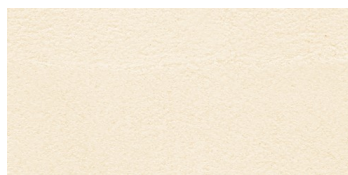
Permacolour Decorative Overlay system is applied over existing concrete floors, drives, patios and footpaths. With unlimited colours, designs and textures, an array of finishes can be achieved to create beautification, architectural accenting and surface protection. It is an affordable, heavy duty alternative to other decorative finishes and produces an extremely durable



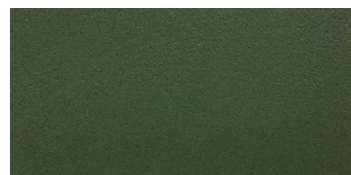
SILVERSAND*



BLUE GUM*



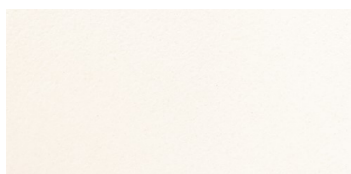
CHATEAU*



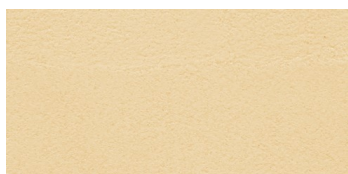
EVERGLADE



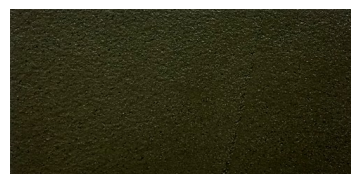
MISTY GREY*



PEARL (BONE)*



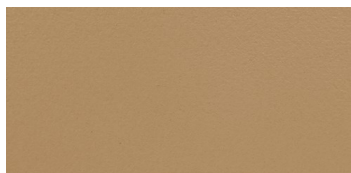
PAVLOVA*



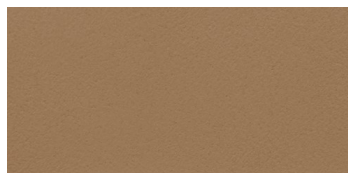
EVERGREEN



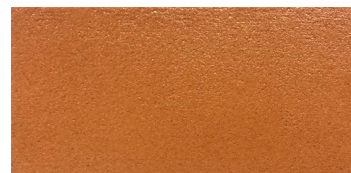
CONCORD*



BUCKWHEAT*



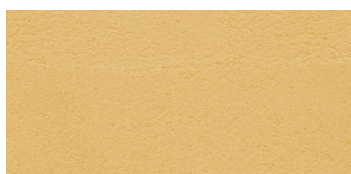
BEIGE*



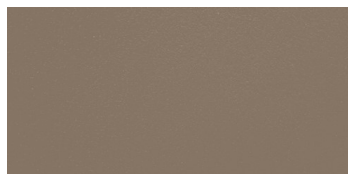
BALI



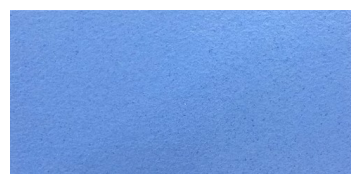
IRONSIDE*



WHEAT



DUNE



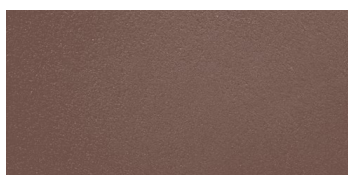
SKYBLUE



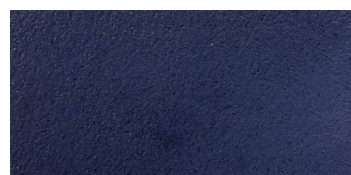
RICOCHET*



SANDSTONE*



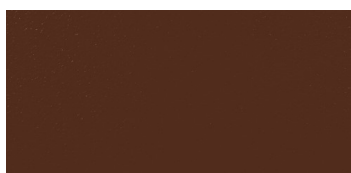
HESSIAN



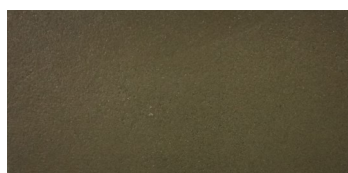
PHANTOM



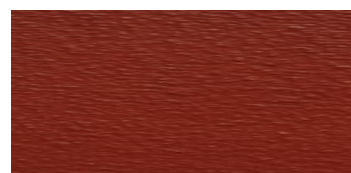
CHARCOAL*



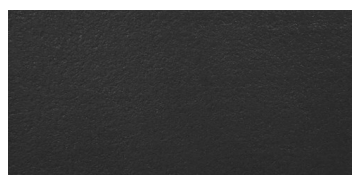
SADDLE



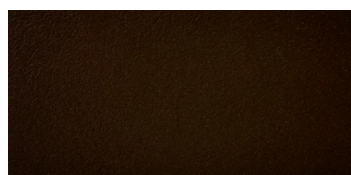
CORK



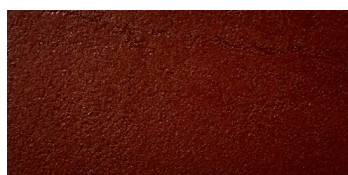
PULSE



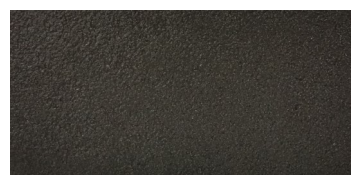
GUNMETAL*



BIRCH



FARRENHEIT



ANTHRACITE*

***COLOURS COME IN PREMIXED BAG, COLOURS NOT MARKED COME WITH BASE AND LIQUID COLOUR PACK**

Due to the printing process, colours may vary from actual colour.

[manufacturers & suppliers of](#) Concrete Colourings | Concrete Coatings & Additives | Concrete Tools

Imprinting & Overlay | Products & Equipment | Oxides & Sealers | Training www.permacolour.co.nz

CONDITIONS OF SALE

The material is guaranteed to be of standard quality and to conform to our published specifications. Since we have no control over use and application of this material, nor the areas to which it is applied, we disclaim any and all responsibility or warranties, expressed or implied, in connection with its use, handling and storage or the results obtained; as well as any injury, damage of any nature whatsoever, resulting from its uses.

The information provided in this brochure is a guideline only.

MANUFACTURERS AND SUPPLIERS OF

BLACK AND COLOURED IRON OXIDES

POWDER
GRANULAR
LIQUID COLOUR

FLOOR COATINGS

OVERLAY
CEMCOTE
COLOUR HARDENER
CHEMICAL STAIN
MICRO TOPPING

WALL COATINGS

CEMPAINT
MICRO COLOUR
FIBRECOTE
DECOCRETE

CONCRETE ADMIXTURES

ACTIVATOR

SEALERS

SOLVENT
EPOXY
URETHANE
WATER BASED
LOW ODOUR
MATTING AGENTS
TINTED SEALERS
DENSIFIERS
SILICONE BASED

STAMPED CONCRETE MATS

SEAMLESS
TIMBER
SLEEPER
STONE & BLOCK PATTERNS
STENCILS

ADDITIVES

WATERPROOFING
PLASTICIZING AGENTS
FIBRES
ACCELERATORS
HARDENERS
EFFLORESCENCE CONTROL AGENTS

ANTISLIP ADDITIVES

GLASS GRIT
SLIP REDUCER

CONCRETE TOOLS

TROWELS
SCREEDS
FLOATS
BROOMS
ROLLERS
CONFORM BOXING
SAFETY NETS
ELECTRIC & PUMP SPRAYERS
GRINDING AND CUTTING DISCS

EQUIPMENT HIRE

GRINDER
VACUUM

SAFETY GEAR

HI VIZ VESTS AND JACKETS
SAFETY BOOTS
GLASSES

HEAD OFFICE 42a Egmont Road, PO Box 7022, New Plymouth,
06 755 3320, info@permacolour.co.nz

FREEPHONE 0508 444 555

AUCKLAND WAREHOUSE Unit 4-16 Zelanian Drive, East Tamaki, Auckland
09 272 8444, auckland@permacolour.co.nz

FREEPHONE 0508 666 777

CHRISTCHURCH OFFICE 23 Watts Road, Sockburn,
PO Box 39148, Harewood, Christchurch
03 358 9669, christchurch@permacolour.co.nz

*New Zealand Decorative Concrete Supplies
is a private company, 100% New Zealand owned and operated, providing the highest
quality products and service in the decorative concrete industry!*