

Micro Topping

September 2021

Permacolour Micro Topping is an extremely fine, coloured cement based floor covering which is versatile, trowel-able and produces a smooth, slightly mottled, decorative, thin set finish for interior use only.

MANUFACTURERS AND SUPPLIERS OF

BLACK AND COLOURED IRON OXIDES

POWDER
GRANULAR
LIQUID COLOUR

FLOOR COATINGS

OVERLAY
CEMCOTE
COLOUR HARDENER
CHEMICAL STAIN
MICRO TOPPING

WALL COATINGS

CEMPAINT
MICRO COLOUR
FIBRECOTE
DECOCRETE

CONCRETE ADMIXTURES

ACTIVATOR

SEALERS

SOLVENT
EPOXY
URETHANE
WATER BASED
LOW ODOUR
MATTING AGENTS
TINTED SEALERS
DENSIFIERS
SILICONE BASED

STAMPED CONCRETE MATS

SEAMLESS
TIMBER
SLEEPER
STONE & BLOCK PATTERNS
STENCILS

ADDITIVES

WATERPROOFING
PLASTICIZING AGENTS
FIBRES
ACCELERATORS
HARDENERS
EFFLORESCENCE CONTROL AGENTS

ANTISLIP ADDITIVES

GLASS GRIT
SLIP REDUCER

CONCRETE TOOLS

TROWELS
SCREEDS
FLOATS
BROOMS
ROLLERS
CONFORM BOXING
SAFETY NETS
ELECTRIC & PUMP SPRAYERS
GRINDING AND CUTTING DISCS

EQUIPMENT HIRE

GRINDER
VACUUM

SAFETY GEAR

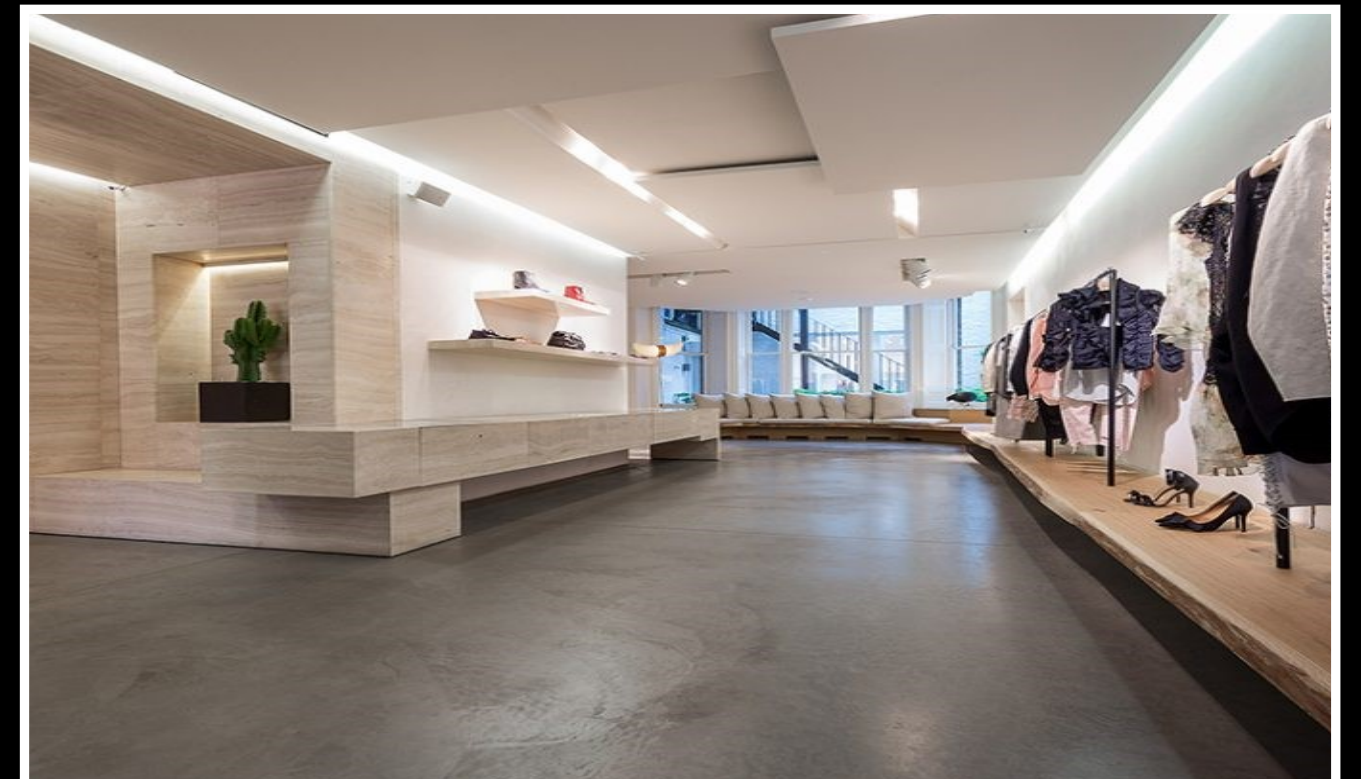
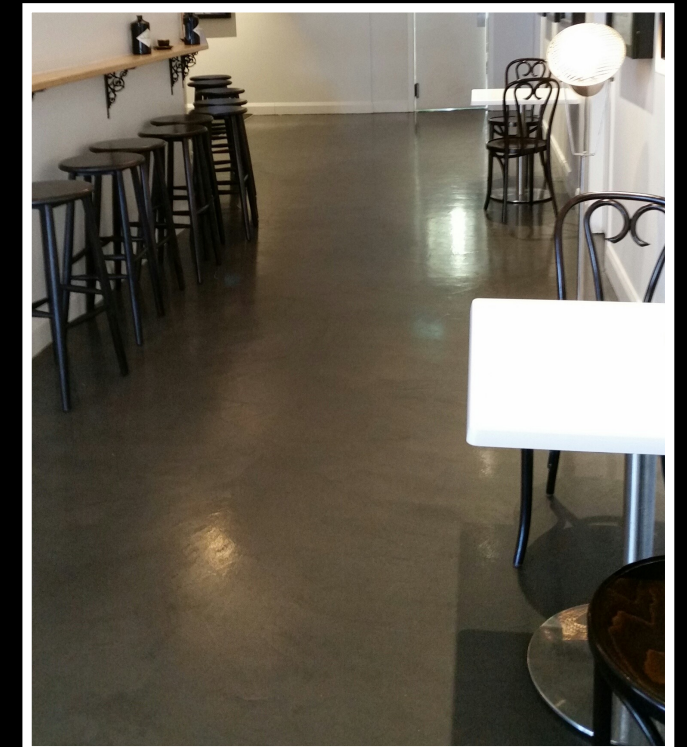
HI VIZ VESTS AND JACKETS
SAFETY BOOTS
GLASSES

HEAD OFFICE 42a Egmont Road, PO Box 7022, New Plymouth,
06 755 3320, info@permacolour.co.nz
FREEPHONE 0508 444 555

AUCKLAND WAREHOUSE Unit 4—16 Zelanian, East Tamaki, Auckland,
09 272 8444, auckland@permacolour.co.nz
FREEPHONE 0508 666 777

CHRISTCHURCH OFFICE 23 Watts Road, Sockburn, Christchurch
03 358 9669, christchurch@permacolour.co.nz

*New Zealand Decorative Concrete Supplies
is a private company, 100% New Zealand owned and operated, providing the highest
quality products and service in the decorative concrete industry!*



Micro Topping

DESCRIPTION

Permacolour Micro Topping is an extremely fine, coloured cement based floor covering which is versatile, trowel- able and produces a smooth, slightly mottled, decorative, thin set finish for interior use only.

PURPOSE

Permacolour Micro Topping is designed to provide a durable, attractive, smooth and economical floor covering for new and existing residential and light commercial surfaces. It is versatile, easy to apply and requires minimal maintenance. Excellent for skimming floors prior to Chemical Staining. (refer to Chemical Stain data sheet).

SPECIFYING

Apply Permacolour Micro Topping in an approved colour to cement surfaces, by trowel all in accordance with the manufacturers specifications.

WEATHER

This product is best applied at temperatures between 5 and 30 degrees. Do not apply under windy conditions or to hot surfaces as this will expose the product to rapid moisture loss.

SUITABLE SURFACES

- For internal use only.
- As a thin set coloured overlay for good, clean concrete, masonry and fibrous cement surfaces.

SURFACE PREPARATION

Ensure that all cracks are properly repaired before application. Placement over moving joints or cracks can result in cracking and delamination. All surfaces should be firm, clean and free from loose adhering particles, previous coatings such as paint, sealers, curing agents, wax and carpet adhesive, which affect bond and final finish.

Any existing coatings must be completely removed from the surface to be coated. For new surfaces, acid wash with a solution of 1 vol. hydrochloric acid and 15 vol. water, or

grind as required to produce a clean, flat surface.

Use Permacolour Skim coat as a leveller in accordance with the manufacturers instructions to repair damaged areas and steel float to achieve a smooth and level surface. The skim coat should be dry before applying Micro Topping (see skim coat datasheet for application instructions).

MIXING

Whilst stirring at a slow speed with an electrical mixer, slowly add 10kg of Micro Topping powder to 4.6 litres of diluted activator mix (1 vol. Permacolour Activator to 1 vol. water) and continue mixing until a smooth lump free consistency has been achieved. Allow to stand for 4 minutes and remix for 1 minute.

If colour is being used, add 1 x 300 gram sachet of colour to the activator mix first, before adding 10kg of Permacolour Micro Topping powder.

APPLICATION

In extreme warm conditions and on porous surfaces, dampen the surface down to prevent rapid moisture loss through evaporation and suction.

Prime the surfaces with a solution of 1 part Permacolour Activator and 2 parts water, by spray, squeegee or broom, ensuring that no excess Activator primer is left on the surface. Two coats of primer may be required depending on the suction of the substrate.

Allow the primer to dry, then trowel down the mix quickly and evenly across the surface, removing all trowel marks. For best results apply a second coat of Micro-Topping when the first coat is dry. The completed floor should be left overnight to dry and lightly sanded on the day following application using 150 grit paper. Protect finished areas until sealed.

COLOURS

- Available in eight standard colours.
- For additional colours, use colour packs with white or grey bases.

PRODUCT INFORMATION SHEET

SEALING

The dry, cured surface can be sealed using Permacolour's range of interior sealers. Choice of sealer is dependent on the finish desired. Apply sealer as specified.

COVERAGE

15 - 20m² per 10kg bag at 0.5mm thick.

Coverage depends largely on the experience of the contractor to trowel thin and evenly as well as the surface texture of the substrate.

PACKAGING:

Micro Topping: 10kg non-returnable paper bags.
Colour Packs: 300 gram sachets

SHELF LIFE

Unopened bags can be stored in a dry shed off the floor on wooden slats for 12 months.

DISCLAIMER

Whilst any information contained herein is true, accurate and represents our best knowledge and experience, no warranty is given or implied with any recommendations made by us, our representatives or distributors, as the conditions of use and the competence of any labour involved in the application are beyond our control. As all Permacolour's technical data sheets are updated on a regular basis, it is the users responsibility to obtain the most recent issue.

CONDITIONS OF SALE

The material is guaranteed to be of standard quality and to conform to our published specifications. Since we have no control over use and application of this material, nor the areas to which it is applied, we disclaim any and all responsibility or warranties, expressed or implied, in connection with it's use, handling and storage or the results obtained; as well as any injury, damage of any nature whatsoever, resulting from its uses.

