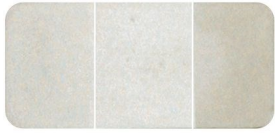
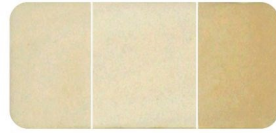


Powdered Integral Colour

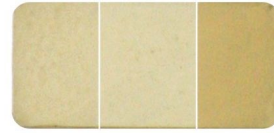
Permacolour Powdered Integral Colour iron oxide pigment, is pre-packaged in water-soluble bags that are added at the concrete batch plant or on site by the contractor. Permacolour Powdered Colour disperses evenly throughout the concrete mix and complies with ASTM C979 Pigments for Integrally Coloured Concrete.



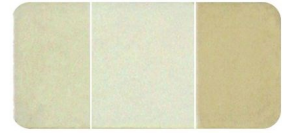
LITHIUM



SOAPSTONE



CANVAS



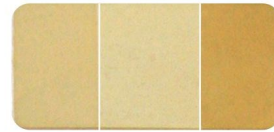
LIMESTONE



LATTE



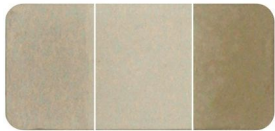
STONEFISH



CARGO



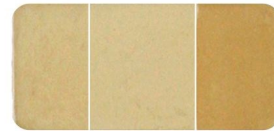
BLUEGRASS



LUSTRE



SEPIA



STRAW



MOSS



TOBASCO



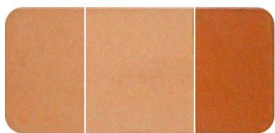
CASHMERE



GOLD COAST



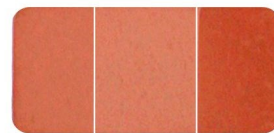
CACTUS



POTTERY



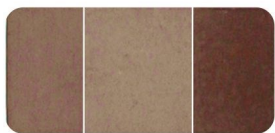
MARTINI



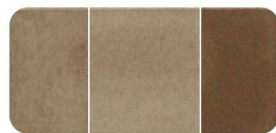
SIENNA



MINT



CHOCOLATE



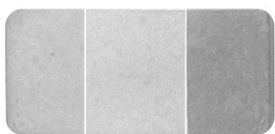
AGED BRONZE



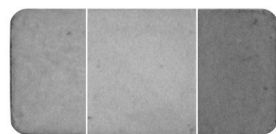
TERRACOTTA



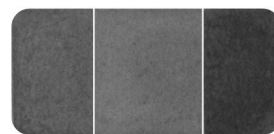
TEAL



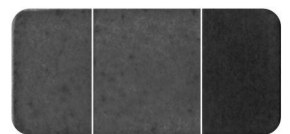
CLASSIC GREY



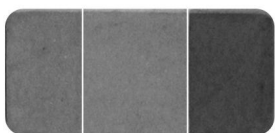
METAL GREY



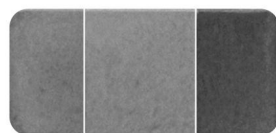
CHARCOAL



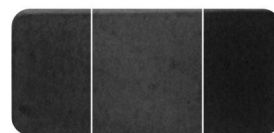
JET BLACK



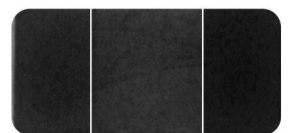
BLACK VELVET



GUN SMOKE



CARBON BLACK



BLACK MAGIC

Due to the batching process, colours may vary from actual colour

MIX DESIGN

The concrete should be designed to meet the strength and finishing requirements of the project with a minimum strength of 20mpa and a maximum slump of 100 mm. Use clean aggregates and cement accurately for each batch. Keep additional water for pouring to a minimum. Do not use reactive aggregates or Calcium Chloride or any admixture containing Calcium Chloride. Permacolour Powdered Integral Colour is compatible with plasticizers and air-entraining products designed for colouring concrete.

BATCH-TO-BATCH UNIFORMITY

Consistent colour can only be achieved by using the same sand, cement, aggregates, water-content and mixing time. Differences in colour of cement, sand, aggregates and volume of water can alter the finished colour. A job-site sample or test slab is recommended. **If the colour is added on-site it must be mixed at full revs for 10 minutes and all other loads mixed for the same period time.**

PREPARATION OF THE SUB-GRADE

The sub-grade must be uniformly graded, compacted and moistened but free of standing water. Follow professional standards and practices.

CONCRETE PLACEMENT METHODS

The slump must be consistent from load to load. Additional water to facilitate placement must be kept to a minimum. Do not add water after a portion of the concrete load has been discharged. Do not re-temper concrete that has started to set.

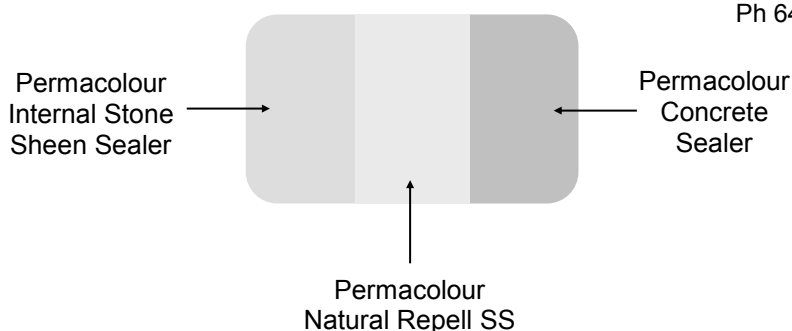
CARBON BLACK PIGMENTS Carbon black and black magic are carbon-based pigments. We highly recommended sealing with a topographical sealer or a solvent based acrylic sealer as the degree of colour change due to weathering is higher than that of other oxides. Not sealing may cause fading and or discolouration as colour may leach out over a period of time.

FEATURES

- Dissolvable
- UV-Resistant Colour
- Mixes Evenly
- Meets ASTM C979

FINISHING TECHNIQUES

Initial floating should be discontinued as soon as the surface becomes wet. Floating may be resumed after the surface water disappears. The final finish such as a broomed, or imprinted surface may be completed after floating. Maintain consistent finishing techniques and avoid hard-troweling for the most uniform colour results. Over-troweling will discolour the concrete. Additional water should not be applied to the concrete surface during finishing.



CURING AND SEALING

Do not attempt to cover, fog or otherwise cure the concrete for a minimum of 24 hours. After 24 hours, use a clear, non-yellowing, breathable, UV-stable, acrylic curing compound. In areas with high heat and low humidity a non-staining evaporation controller and/or sealers may be applied sooner. If conditions are cool or if the sub-grade or concrete is overly wet efflorescence may appear. Remove the white powder before sealing by using Hydrochloric Acid. For best results, if you are sealing the coloured concrete, use a colour that is 10 kg or over per m3. Sealing 5 kg per m3 will darken the colour and will not bring out the colour as it does with a higher oxide content.

WARRANTY

This product is not intended for public use. It is intended for use by contractors and installers experienced and trained in the use of these products. It is warranted to be of uniform quality within manufacturing tolerances. The manufacturer has no control over the use of this product. Therefore, no warranty, expressed or implied, is or can be made either as to the affects or results of such use. In any case, the manufacturer's obligations shall be limited to refunding the purchase price or replacing material proven to be defective. The end user shall be responsible for determining the product's suitability and assumes all risks and liability.

The colours on this colour chart are stock colours and are available, in most cases, for same day shipping. Custom colours that are matched to a pre-established industry equivalent, are available for same day or next day shipment. Custom colours with no pre-established industry equivalent have a minimum lead time of one week. This colour chart is a representation only and does not guarantee that the final colour will be an exact match. Grey cements, white cements and variations in aggregates will produce different colours. Finished texture, timing of operations, curing or forming methods, release agents, and surface treatments will each affect the finished colour.

For complete information, refer to the Permacolour Powdered Integral Colour Technical Information Sheet.

Head Office

42a Egmont Road, P O Box 7022, New Plymouth

Ph 64 6 755 3320, Fax 64 6 755 0054

info@permacolour.co.nz

Auckland Warehouse

Unit 4/16 Zelianian Drive, East Tamaki, Auckland

Ph 64 9 272 8444

Christchurch

25a Sheffield Crescent, Burnside, Christchurch

Ph 64 3 3589669

manufacturers & suppliers of

Concrete Colourings
Concrete Coatings & Additives
Concrete Tools
Imprinting & Overlay
Products & Equipment
Oxides & Sealers
Training

www.permacolour.co.nz